



Band of Blue

Middle Tennessee State University  
Murfreesboro, Tennessee

# WIND ENSEMBLE CONFERENCE

February 21, 22, and 23  
Nineteen hundred eighty-six

## Guest Conductors



**Mr. Vaclav Nelhybel**

Vaclav Nelhybel, an international award-winning composer and conductor, was born in Czechoslovakia and studied in Prague and Fribourg, Switzerland. At the age of twenty he was conductor at Radio Prague and the Prague Theater. His rapid rise to national and international acclaim came via conducting positions with the Czech Philharmonic Orchestra, Vienna Symphony, Salzburg Mozarteum, orchestras in Geneva and Lausanne, and the famed Munich Philharmonic. His success as a conductor paralleled his prize-winning compositions to further establish him as a prominent European musician.

Mr. Nelhybel moved to the United States in 1957, where his rare talent was immediately appreciated. He has received two honorary Doctorate degrees, numerous fraternal honorary memberships, frequent invitations as guest conductor and lecturer, and has held advisory positions on several professional boards. His guest appearances have taken him to forty-eight states and many countries.

Claude T. Smith, a native of Missouri, received his education at Central Methodist College, Fayette, Missouri, and at the University of Kansas. He has composed extensively in the areas of instrumental and choral music.

Mr. Smith has over 110 published works, and has composed solos for such artists as "Doc" Severinsen, Dale Underwood, Brian Bowman, Warren Covington, and Rich Matteson.

He has received numerous prestigious commissions including works for The U.S. Air Force Band; The "President's Own," The U.S. Marine Band; and the U.S. Navy Band. His composition "Flight" has been adopted as the "Official March" of the National Air and Space Museum of the Smithsonian Institution.



**Mr. Claude T. Smith**

The All State Wind Ensemble is an elite group of outstanding high school musicians from Tennessee, Kentucky, and Georgia who represent the very best in our secondary school instrumental programs. The name of the ensemble was chosen to reflect the fact that each member has performed or has been selected to perform with their respective "All State Bands." Middle Tennessee State University is proud to afford these students this rare opportunity to perform with the very best.

---

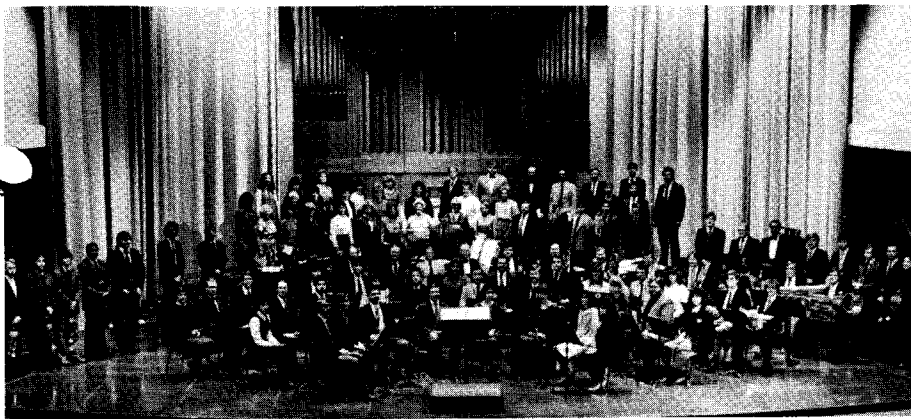
**Program**  
*(to be selected from)*

Toccata	Girolamo Frescobaldi <i>arr. Earl Slocum</i>
Pageant	Vincent Persichetti
Variants on a Mediaeval Tune	Norman Dello Joio
Fantasia	Vaclav Nelhybel
Valdres	Johannes Hanssen
Elsa's Procession to the Cathedral	Richard Wagner
Festive Overture	Dimitri Shostakovich

**Host Conductor**  
Joseph Smith

**Guest Conductor**  
Vaclav Nelhybel

*Intermission*



## Middle Tennessee Community Band

The Middle Tennessee Community Band comprises professional, semi-professional, and outstanding university musicians. Meeting weekly, these men and women continue their enjoyment of band music with a degree of proficiency which will astound the listener. This is a serious musical organization in pursuit of excellence.

---

### Program

Duke of Cambridge

Malcolm Arnold

Liebestod 6:48

Richard Wagner  
*arr. Glen C. Bainum*

Festival Variations 10:10

*the composer conducting*

Claude T. Smith

Concertino 7:49

*Cindy Naron, flute soloist*

Cecile Chaminade

Pineapple Poll

2:40

Arthur Sullivan  
*arr. Charles Mackerras*

4:08

2:15

# All State Wind Ensemble

## Personnel

### **Flute**

Deanna Clark  
Carol Fisher  
Donna Hall  
Joanie Neel  
Katherine Smith  
Julie Williams

### **Oboe**

Lisa Childress  
Ann Loree  
Heather Sharpe  
Philip Smith

### **Bassoon**

Elizabeth Griffin  
Stephen Holland

### **E♭ Clarinet**

Kim Newman

### **B♭ Clarinet**

Tracey Aliff  
Katrina Bernardini  
Jeff Blunkall  
Jennifer Brand  
Andrea Clement  
Althea Hams  
Cindy Hensley  
Holly Hooper  
Claudette Metz  
Hilary Parks  
Amy Ralph  
Lynn Williams  
Lynn Yearwood

### **Alto Clarinet**

Susan Billingsley

### **Bass Clarinet**

Luanne Walter  
Jane Woody

### **Contra Bass Clarinet**

Lisa Mosley

### **Alto Saxophone**

Cheryl Pledge  
Christy Tedrow

### **Tenor Saxophone**

Tamera Hall

### **Trumpets**

Julie Attig  
Mike Casteel  
Sean Fagin  
Warren Files  
Ped Foster  
Bryan Hooks  
James Glenn Tate  
Tony Ward

### **Horns**

John Bailey  
Derrell Billingsley  
Nancy Bradley  
Chris Franks  
Dave Glasgow  
Allen Huang  
Jamie Marshall

### **Trombones**

James Bagwell  
Keith Brown  
Brian Holland  
Al White

### **Baritone**

Jay Ragland

### **Tuba**

Steve Hodges  
Danny Pond  
Sid Smith

### **Percussion**

Mike Dickerson  
Brian Gannon  
Robby Stevens  
Jerry Wallace  
Paul Waters

# The Murfreesboro Community Concert Band

## Board of Directors

**Chairman of the Board:** Robert Tuma

**Publicity:** Matt Ward

**Property:** Larry Buckley

**Secretary-Treasurer:** Paula Kilgour

**Personnel:** William Riggs

**Librarian:** Marcus Arnold

**Fund Raising:** J. Madison Dill

**Board Members-at-Large:** Rick Murphy, Robert Tuma, William Coward, Cindy Naron

### Flutes

Jon Brock  
Susan Dugger  
Becky Hovan  
Cindy Naron  
Joanna Riggs

### Oboes

Ray Boling  
Dewayne Pigg

### E♭ Clarinet

Ann Malone

### B♭ Clarinet

Sam Davis  
Wayne Dorothy  
John Duke  
Marian Gregory  
Rick Murphy  
Pam Nosbusch  
Karl Procter  
Brad Rogers  
Jim Tucker  
David Wilkes

### Alto Clarinet

Heidi Konzett

### Bass Clarinets

Cammy Bouvin  
Greg Lawson

### Contra Bass Clarinet

Dawn Forman

### Bassoons

Julia Chandler  
David Walker

### Alto Saxophones

Eddie Grooms  
Sally Oddo

### Tenor Saxophone

William Riggs

### Baritone Saxophone

Duane Kilby

### Cornets and Trumpets

Bill Coward  
J. Madison Dill  
Kent Fyock  
Jeff Jansky  
Tom Naylor  
Robert Tuma  
Matt Ward

### Horns

Sharon Britton  
Terry Jolley  
Jeff Quirk  
Jeff Vandergriff  
Vicky Williams

### Trombones

Jeff Beech  
Larry Buckley  
Gary G'fellers  
Stanley White  
Tim Wilson

### Baritones

Greg Payne  
Devin Smith

### Tubas

Marcus Arnold  
Fred Barlow  
Stan Baskin  
Darrell Boston

### Percussionists

Randy Davidson  
Phillip Gregory  
David Sevier  
Danny Wulfers  
Kirk Bowker

**The conductor...** Now in his twenty-ninth year of association with the Middle Tennessee State University Band, Joseph Smith, organizer and host conductor of the Wind Ensemble Clinic, continues to provide activities designed to reward excellence in young musicians and to bring to the university and community visiting musicians the calibre of Claude Smith and Vaclav Nelhybel. Director Smith, who maintains an active role in the profession, has appeared in twenty-four states, Canada, and Mexico as guest conductor, clinician, or adjudicator. Most recently he was included in the current *International Biographical Dictionary*, Cambridge, England; was featured in the *School Musician* for his contributions to bands in America; and received the 1985 Distinguished Alumni Award from Middle Tennessee State University.